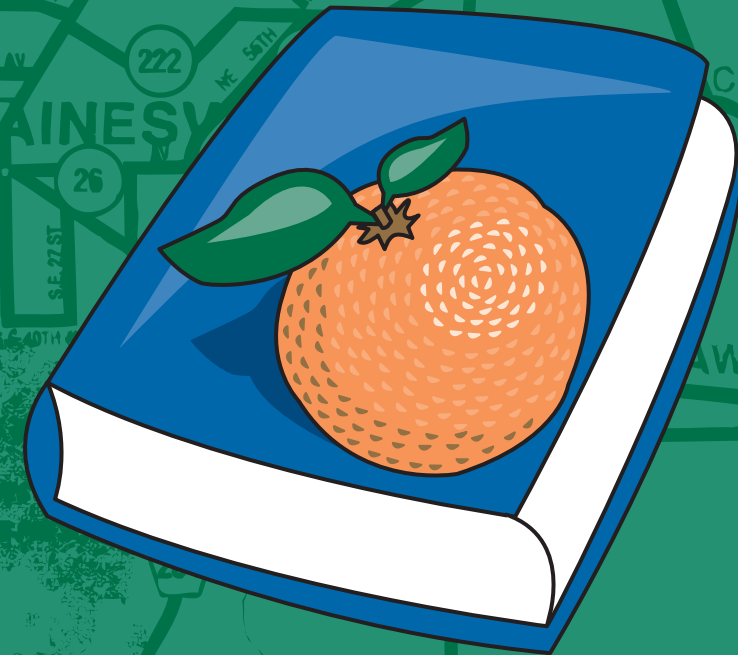


## What happens after I complete the Pathways to Teaching program?

School districts in Florida are always on the lookout for good prospective teachers, especially in mathematics, science, and the foreign languages. Graduates of this program who earn a GPA of 2.5 or higher in their area of specialization will be eligible for a three-year Temporary Certificate in that specific area in Florida. Some additional professional preparation, CLAST, the Florida Teacher Certificate Examination, and other requirements must also be satisfied for eligibility for a five-year Professional Certificate. The College of Education and the College of Liberal Arts and Sciences are actively engaged in negotiating employment opportunities in selected school districts in the state of Florida for graduates of the *Pathways to Teaching* program.

# Pathways to Teaching

A four-year program to teaching in Florida's schools



UNIVERSITY OF  
FLORIDA

College of Liberal Arts and Sciences  
College of Education

### For more information, please contact:

College of Liberal Arts and Sciences Glenn Kopic Academic Advising Center (352) 392-1521	College of Education Robin Rossie 134E Norman Hall (352) 392-0721 ext. 400
---	---



UNIVERSITY OF  
FLORIDA

College of Liberal Arts and Sciences  
College of Education

# Teach in Florida

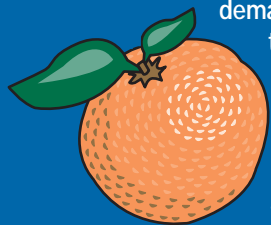
The *College of Liberal Arts and Sciences (CLAS)* and the *College of Education (COE)* announce *Pathways to Teaching*, an exciting new opportunity for CLAS undergraduates interested in secondary school teaching in the state of Florida in mathematics, science and foreign languages.

## What is Pathways to Teaching?

*Pathways to Teaching* is a four-year alternative pathway to secondary school teaching in the state of Florida. Students in the program combine a traditional CLAS major in mathematics, science and some foreign languages with an expanded *Pathways to Teaching* minor in the COE (24 credits).

## Why is it important?

Florida is growing. Approximately 42,000 new students will enter Florida schools next fall. The need for well-prepared teachers in the secondary schools is critical, especially in the fields of math, science and some foreign languages. *Pathways to Teaching* prepares CLAS undergraduates to meet increased demands for qualified and energetic teachers in the secondary schools *responsibly and more rapidly*—by combining field-based teacher education courses with content courses in the major in a four-year program.



## Who should apply?

CLAS undergraduates who are interested in pursuing a career in secondary school teaching (or in investigating teaching as a first career) with majors in the following fields:

Chemistry  
Earth Science  
French  
German  
Latin  
Mathematics (BA)  
Physics (BA)  
Spanish

## Why should I choose Pathways to Teaching?

Teaching is one of the most satisfying, rewarding careers that you can elect to pursue. If you are enthusiastic about your major, want to inspire others to learn, and begin teaching in the schools immediately after completing your undergraduate degree, *Pathways to Teaching* is for you.

## What courses and when?

Students in the above majors will follow the regular sequence of courses in their major. A menu of the required teacher education courses for the *Pathways to Teaching* minor is available with CLAS undergraduate advisors for these majors, at the Academic Advising Center and in Norman Hall in the College of Education. Several of these courses also satisfy the general education requirement.

Students may elect to take teacher education courses to accompany their major in the *Pathways to Teaching* program as early as their first year at UF, but they can also start the program as late as their junior year. Several of the COE courses are taught in the summer; many of them include a field-based component which introduces students to actual classroom experience early on in the program. Students should plan ahead, since some COE courses, such as teaching methods and the practicum, must be taken in a block.

Some of the COE courses are taught at the graduate level but will be open to students in *Pathways to Teaching*. Discrepancies in tuition may apply. For instance, Bright Futures Scholarships will cover the cost of graduate courses taken as part of an undergraduate program at the undergraduate rate; courses taken at the graduate level are paid for through the Florida Prepaid program at the undergraduate rate, provided that the *Pathways to Teaching* program is completed in 120 hours.

Students in *Pathways to Teaching* will have the opportunity to integrate their teacher education course work with actual classroom experience. The *P.K. Yonge Developmental Research School* on the UF campus is a full partner in the program.